



# Lewis County Genealogical Society

PO Box 782

Chehalis WA 98532

<http://www.walcg.org>

Volume #22 Issue # 2

Mar-Apr 2012

## Officers

**President – Bob McDole**

(360) 266-0282

**1<sup>st</sup> Vice President – Linda Patton**

(360) 262-3672 [susie@localaccess.com](mailto:susie@localaccess.com)

**2<sup>nd</sup> Vice President – Patty Olsen**

(360) 219-6912

**Secretary – Joann Hulse**

(360) 748-4244 [wjhulse@localaccess.com](mailto:wjhulse@localaccess.com)

**Treasurer – Leslie Parnell**

(360) 978-4267 [lparnell@tds.net](mailto:lparnell@tds.net)

**Genealogist - Margie Lloyd**

(360) 748-3069

**Co-Editors of the bi-monthly**

**Newsletter are: Leslie Parnell**

[lparnell@tds.net](mailto:lparnell@tds.net) &

**Teresa Parnell-Jordan**

[jordanjunction@hotmail.com](mailto:jordanjunction@hotmail.com)



## Important Note:

The **web sites** listed in this newsletter are direct links – just click your mouse (while online). The above **emails** are only direct links if you use Outlook on your computer for email service.

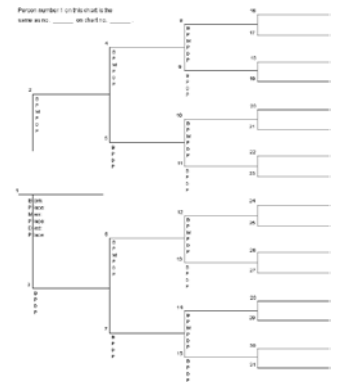
**Or open your email provider web site** (hotmail, gmail, etc) and then copy & paste the email to your new outgoing message.

**17 Apr 2012-LCGS.** Julie McDonald Zander, a personal historian from Toledo, will share some ideas for triggers to spark memories of your childhood and growing up years, milestones you'll want to record for family members, and your hopes and dreams for the generations to come. Julie, a longtime newspaper reporter and editor, launched her personal history business, Chapters of Life, in 1999 to help people record and preserve their life stories. She also is a columnist for The Chronicle and newly elected secretary of the Lewis County Historical Society's board of directors. Meeting is at the PUD Auditorium, 345 NW Pacific Avenue, Chehalis, WA. Help with research will begin at 6pm followed by the meeting at 7pm.

\*\*\*\*\*

## “Reminder” PEDIGREE CHARTS

Members-please submit your **PEDIGREE CHART** for our membership book. Also, state permission to print in the newsletter.



\*\*\*\*\*

## LCGS MEETINGS

**20 Mar 2012- LCGS -** Field Trip to FamilySearch center, Church of the Latter Day Saints, 2195 Jackson Hwy, has been rescheduled. We had to cancel due to weather conditions. (Entrance is at back of building, should you be unable to use the steps; there is an entrance on the south side of the building). Volunteer librarians will explain the research tools available at the FSC. You do not have to be a member to use the center. Meeting is at 7 pm with doors open at 6:45 pm. No early research will be held before the meeting. There will be some time to do some research after the orientation. See you there!

## Items for the Newsletter

Please have to editors by the end of April for the next newsletter. Queries are accepted as space permits.

## WELCOME RETURNING MEMBERS

**Judy Wallace KALICH**, 614 Newaukum Valley Rd, Chehalis, WA 98532, ph 360-748-6065, email judywk@comcast.net.  
NICEWONGER, NEUENSCHWANDER, &PETTETT, Nebraska; FLICKINGER, KALICH.

**Carolyn & Mike BAKER**, 881 Shorey Rd, Chehalis, WA 98532, ph 360-748-7390. PAKAR; BREMGARTNER; RUETHER.

**Rosalie BOWMAN**, 261 Hewitt Rd, Chehalis, WA 98532, ph 360-748-4540, [arebee@localaccess.com](mailto:arebee@localaccess.com). WEBSTER; HODGE; WOODWARD; RUSSELL; BEDELL; PALMETER; AMES.

**Leslee DUNLAP**, PO Box 200, Mineral, WA 98355, ph 360-492-3237.

**Rheata B. HAYWARD**, 618 Oppelt Rd, Chehalis, WA 98532, ph 360-262-3413, [RBCI554@localaccess.net](mailto:RBCI554@localaccess.net). WALTER, Winlock, WA; McCLAIN, Indiana; WIBRA, New Orleans, Indiana, TN; WARD, Montana, WA.

**Tam & Roger HINCK**, 138 Equine Dr, Onalaska, WA 98570, ph 360-5299, [minihorseteacher@tds.net](mailto:minihorseteacher@tds.net).

**Joann HULSE**, 2274 Rice Rd, Chehalis, WA 98532, ph 360-748-4244, [wjhulse@localaccess.com](mailto:wjhulse@localaccess.com). WEAVER, Alabama; FROST, South Carolina, Alabama; CARSON, North Carolina, Alabama; HULSE, PARKER, SCHOONOVER, New York; HEDELUND, Denmark, New York, Wyoming.

**Teresa JORDAN**, 177 Gore Rd, Onalaska, WA 98570, ph 360-978-4244, [jordanjunction@hotmail.com](mailto:jordanjunction@hotmail.com). JORDAN; WILDER; GALVIN; KILDOW

**Robert McDOLE**, 108 Hilley Drive, Chehalis, WA 98532, ph 360-266-0282, [mcdole@localaccess.com](mailto:mcdole@localaccess.com).

**Leslie PARNELL**, 183 Kruger Rd, Onalaska, WA 98570, ph 978-4267, [lparnell@tds.net](mailto:lparnell@tds.net). GOODWYN; MUCHMORE; LOONEY; AVANTS; NICHOLS; STEVENSON.

**Richard & Gayle STEVENS**, 121 McCall Lane, Chehalis, WA 98532, [dgmrs@q.com](mailto:dgmrs@q.com).

**Mary WHITE**, 132 Avery Road East, Chehalis, WA 98532, ph 362-3254.

**Merlyn & Douglas WISNER**, 133 Ridgeview Rd, Chehalis, WA 98532, ph 360-748-4675.

## WELCOME NEW MEMBERS

John BLANCHARD

**Margaret IVERSON**, 210 Pattee Rd, Chehalis, WA 98532, ph 360-740-5899. MINOR, WELLS, WRIGHT, West Virginia, Virginia, Kentucky.

**Sharolyn & Joe WILEY**, 819 Sunrise Lane, Centralia, WA 98531, ph 360-736-1637, [jswiley@msn.com](mailto:jswiley@msn.com), [sharolynwiley@gmail.com](mailto:sharolynwiley@gmail.com). WILEY; OSGOOD; COIT.

## ALL ABOARD! CALLING ALL GENEALOGISTS

Chehalis & Centralia are celebrating the 100<sup>th</sup> year Anniversary of the Chehalis and Centralia Railroad Depots in May. To celebrate this event, the Lewis County Genealogical Society will host a genealogy open house anytime between 10 am to 3 pm on Saturday, May 12<sup>th</sup> at Vernetta Smith Chehalis Timberland Library in the Art & Ruby Hamilton Community room. We will be there to answer genealogical questions, help you get started and to give research tips. So, bring your family papers and get some 'one-on-one' help. Volunteers are needed. Chair Margie Lloyd will be at the March meeting or you can contact her 748-3069 to volunteer.

### FamilySearch centers

At a **FamilySearch center** (formerly named Family History Center), you can search billions of online records. These centers also offer access to the LDS circulating collection of 2.5 million microfilms from over 100 countries.

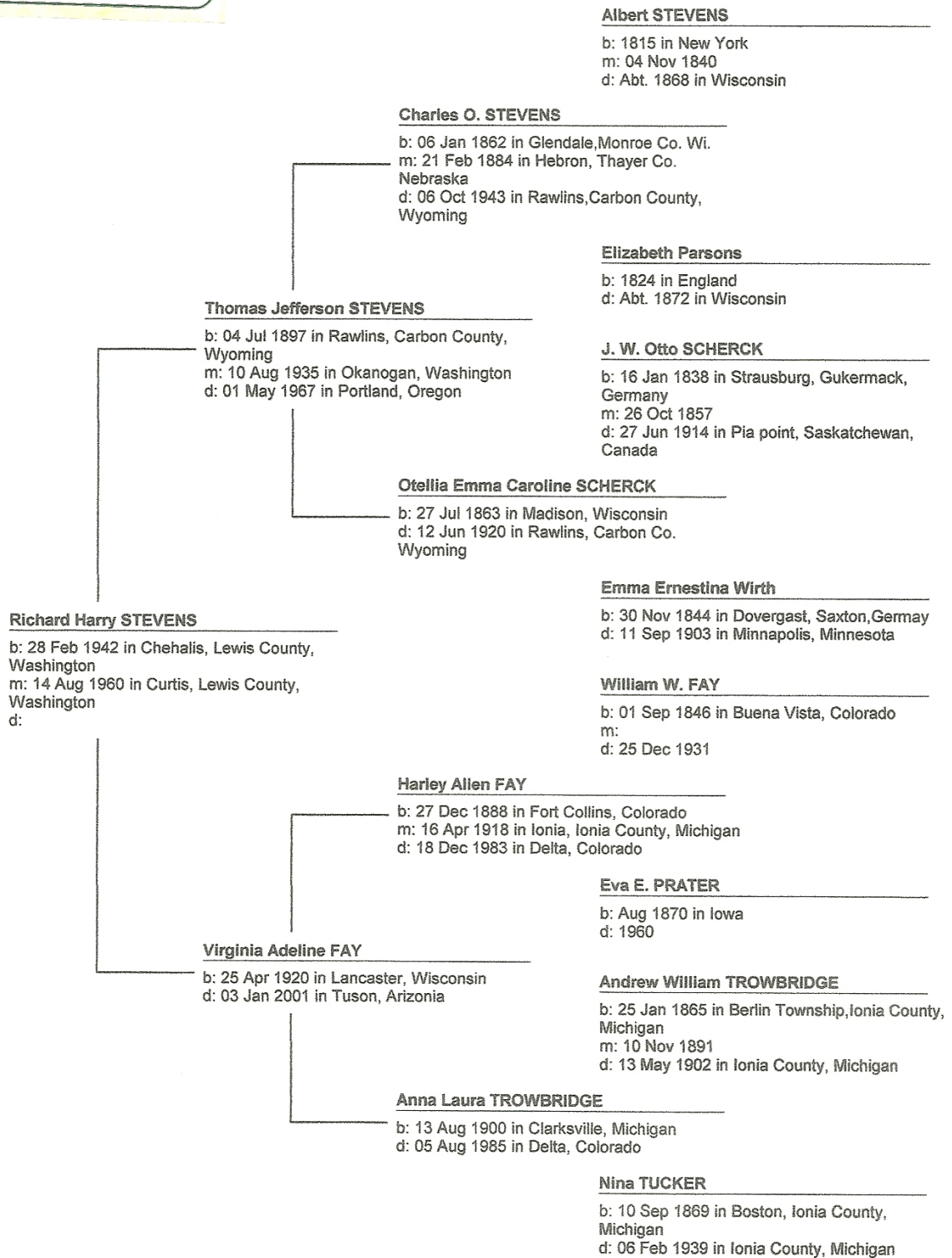
**Volunteer staff at a FamilySearch center** will help you understand and use their available resources. If you are a beginner, they can help you get started with your own family history. Anyone anywhere in the world can access their records for free at [www.familysearch.org](http://www.familysearch.org). **Two research tools are free** online classes and rental of microfilm. They are a great complement to the free personal research assistance the FamilySearch center offers their patrons worldwide. Just click on the Free Online Classes on the home page or films and follow the

instructions to order microfilms sent to the  
FamilySearch center in your locality.

**S**

Mr. Dick Stevens  
121 McCall Ln.  
Chehalis, WA 98532

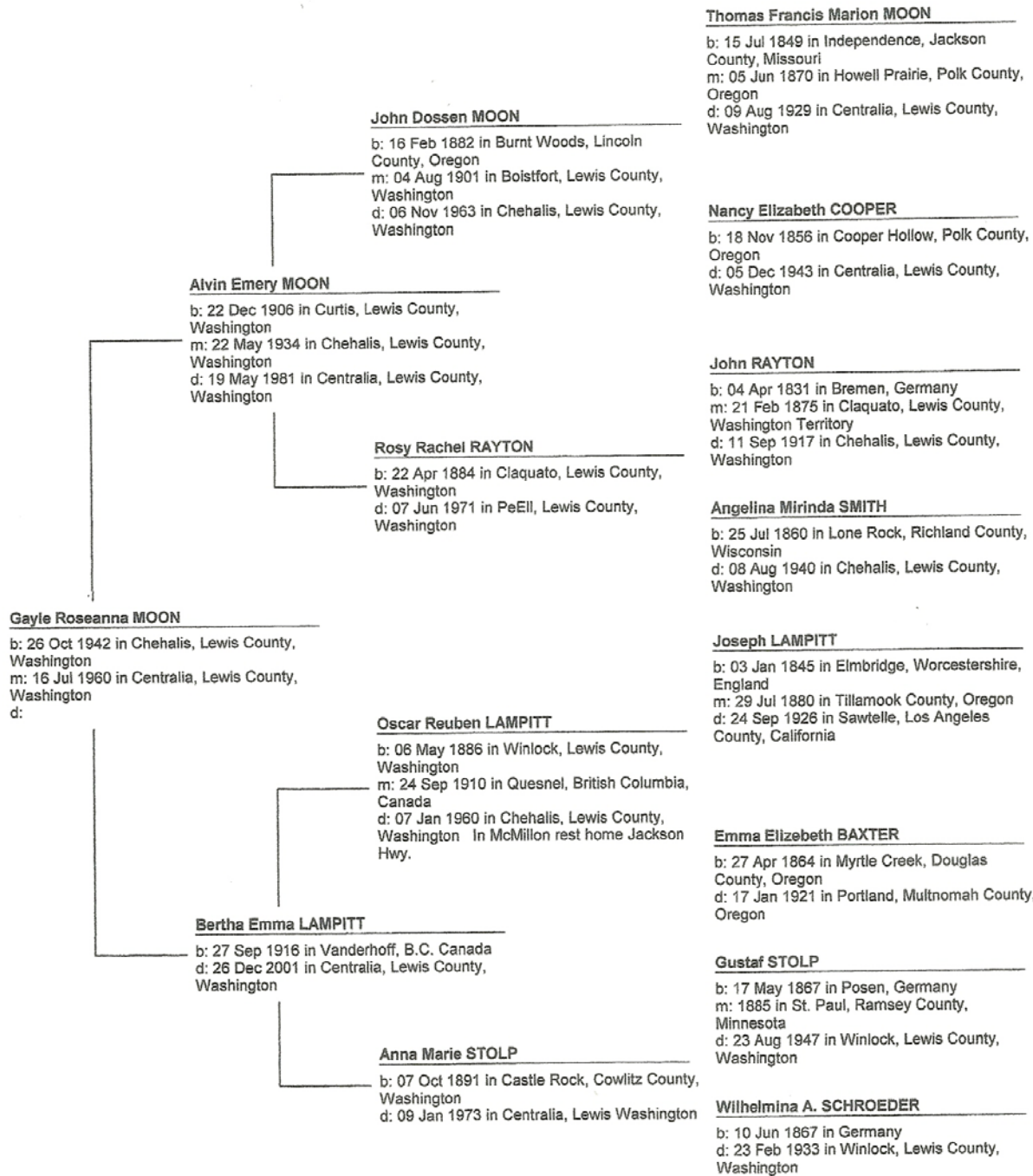
**Standard Pedigree Tree**



Notes:



**Standard Pedigree Tree**



**SEMINARS**

**14 April** Research in the Old Northwest Spring Seminar sponsored by the Olympia Genealogical Society. Guest speaker is James L. Hansen, Librarian at the Wisconsin Historical Society. Other topics: "Research in the States of the Old Northwest: Ohio, Indiana, Illinois, Michigan, and Wisconsin"; "The Draper Manuscripts: What They Are and How to Use Them"; "Resources of the Wisconsin Historical Society - Not Just Wisconsin"; "Pioneer Genealogy: Tracing Your Ancestors on the Midwestern Frontier." More information will be posted at <http://www.rootsweb.ancestry.com/~waogs/> as it becomes available.

**21 April** Yakima Valley Genealogical Society Spring Seminar presents J. H. Fonkert, CG. Topics are British Isles Research and Research in the Netherlands (Dutch). Location is Mount Olive Lutheran Church, 7809 Tieton Drive, Yakima, WA, 9 am-4 pm with cost of \$30. (includes lunch) More info at meeting.

**5 May** Clark County Genealogical Society presents Miriam J. Robbins as their Spring Seminar speaker. Miriam's program will be The Frugal Genealogist, Affordable, Digital, High-Tech Research, 8:30 am – 4:15 pm. Research Library, 717 Grand Blvd., Vancouver, WA 98661, <http://www.ccg-wa.org> and email [gensoc@ccgs-wa.org](mailto:gensoc@ccgs-wa.org). Cost is \$40. Non Member, deadline May 1<sup>st</sup>.

**19 May** Spring Seminar sponsored by the Seattle Genealogical Society. Guest speaker is George G. Morgan, from "The Genealogy Guys." This event will be held at the Museum of History & Industry's McEachern Auditorium, 2700 24th Ave East, Seattle. Registration starts March 2012. Cost: \$45 for non-SGS members. More information will be posted at <http://seattlegenealogicalsociety.org/> as it becomes available.

**22 May Tacoma**-Pierce County Genealogical Society presents *When Genealogy Meets Technology* with Cyndi Howells and Emily Aulicino. Will be at La Quinta Inns and Suites, 1425 East 27<sup>th</sup> St., Tacoma, WA. Cyndi's Topics: *The Internet: A Genealogist's Printing Press; Social Networking: A Genealogist's Water Cooler*. Emily's Topics: *The Gene in Genealogy; Writing Your Childhood and Family Memories*.

.....

**HAVE YOU PAID YOUR DUES?**

**WASHINGTON STATE  
GENEALOGICAL SOCIETY  
2012 CONFERENCE**

Host Clallam County Genealogical Society presents "Armchair Genealogy from the Pacific NW", September 7-8, 2012 in Port Angeles, WA. Featured Keynote Speaker is Brian W. Hutchison, C.E.O. Gen-find Research Associates, Inc.; Forensic Genealogist, Author and Instructor; Fellow of the Society of Antiquaries of Scotland.

Links for more info—scroll down on the first link: <http://www.rootsweb.ancestry.com/~wasgs/index.htm> and <http://www.olypen.com/ccgs/page58.htm>

**FACIAL RECOGNITION PROGRAM**

Facial recognition has become available for consumers. One such example of this digital image software is the free Picasa program from Google. Simply download the program from the Google website. Picasa3 is the latest release available. The program works with image files stored on your hard drive. With each successive image the program suggests who the individual may be, based on the facial recognition algorithms built into the software. The more cataloged photos on your hard drive, the more accurate additional photos will be. (Griva News & Notes Fall/Winter 2011; *The Beacon*, Sno-Isle Genealogical Society, Mar 2012)

**GETTING TO KNOW OUR MEMBERS**

Linda Patton, 1<sup>st</sup> Vice President  
2012-2013



In June of 1963 my Mom and Dad and I, (Robert Orlando Patton & Helen Mavis McDowell), along with my Dad's cousin and his wife (Russell & Jean Gordon), arrived in Chehalis. Our families were from Oklahoma, and my Dad and Russell were working in the oil fields and so traveled from job to job, and had worked that winter in Cutbank, Montana. They heard of a job here drilling wells for

the gas storage project just south of Mary's Corner, so we came to see what that was about. My Dad and Russell both went to work for Taylor Drilling, and our first homes were the small little cabins just south of the Jackson Courthouse on Jackson Hwy. They had recently been refurbished, so we were the first to live in them. We were in Cabin 3, and the cousins in Cabin 4.

That first Christmas we spent in Forks, oh how wet and cold that was!!! But memorable I guess ☺ we missed family, especially at the holidays. Until moving here I'd lived across the street from my Grandparents. Speaking of my Grandparents – Robert Lee Patton and Minnie Lenora Barnes, they were very proud of all of us, but I was their only grandchild born in Kansas, which is where they were both born, Garden City, Finney County, Kansas to be exact.

As for my love of Genealogical research – it all started with my Dad buying a 1973 Impala! Yes, a car. Back then about every three months or so you got a notice in the mail for oil change, etc. And, usually they had something such as a copy of the Constitution, or the pictures of all the Presidents and flags. Well, one month it was a lovely tree shaped ancestor chart! And, I wanted to fill it out. With much encouragement and help from my Mom, I began my long journey of searching for my ancestors. I love burying myself in research, and finding long lost cousins. When I started we all anxiously waited for the mail man to come to see if perhaps we'd heard from a new cousin – who might just send us all the information on a branch! It happened, but not often.

In 1995 I was hired at the Lewis County Sheriff's Office, and have been working there since that time. I have a very interesting and challenging job, but then what job is not challenging ☺ The past four months I have been stretched even further and have learned a ton of stuff filling in on another position that I don't usually do. It is a good job...and I feel lucky to have it.

These days I live with my little dog Charlie, participate in a Red Hat group – the Razzle Dazzle Diva's of Centralia, family research, and knitting, crocheting and reading. *Linda Patton*

## 1940 U.S. Census Community Project

Upon the release of the 1940 U.S. Federal Census in April of 2012, the 1940 U.S. Census Community Project, a joint initiative between [Archives.com](http://Archives.com), [FamilySearch.org](http://FamilySearch.org), [findmypast.com](http://findmypast.com), and other leading genealogy organizations, will coordinate efforts to provide quick access to these digital images and immediately start indexing these records to make them searchable online with free and open access.

The 1940 U.S. Census Community Project needs volunteers from genealogical and historical societies to provide essential support in this effort. Societies and individuals can provide expert help to transcribe census records from the areas where they live or have interest, creating an accurate, searchable index while at the same time generating excitement for society and volunteer activities. [www.the1940census.com](http://www.the1940census.com).

## SOCIETY MEMBERS

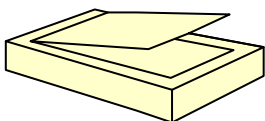
You don't need to wait until the 1940 U.S. Federal Census project begins to make a difference. Sign up to index other records today and begin enjoying these benefits:

- Great volunteer opportunity that benefits thousands of other genealogists and history enthusiasts
- Become familiar with the FamilySearch indexing software and process so you'll be ready when the 1940 U.S. Federal Census becomes available
- Gain knowledge and experience that will help your fellow society members join the nationwide effort to index the 1940 U.S. Federal Census

**Get started today by downloading the indexing software and beginning your first project.**

*Shh! Be very, very quiet...I'm hunting forebears*

## Scanning Sense By Maureen Taylor



**Here’s a big question:** Is it OK to scan photos onto your computer for storage and reprinting?

**The short answer is yes.** Scanning is misunderstood. There is a common belief that scanning will destroy pictures. Sure scanning exposes images to heat and light, but a single pass of the scanner won’t cause permanent damage. Plus, it’s important to remember that by scanning your images you’re creating a digital copy in case something happens to the original. While it’s not recommended to scan the same image again and again, it’s okay to scan it once. Photocopying is more hazardous to your images than scanning. Copiers are a toxic combination of heat, light and chemicals. Scanning is a quick pass of light. The key to saving your photos in a digital format is to know the facts.

**Resolution:** It’s important to scan at a high resolution. You can always make a digital file smaller, but you can’t increase the resolution. It’s advisable to scan at the highest possible resolution (at least 600 dpi) at 100% scale, in color (even if they are black and white) and save them as Tiff files. Scanning photos at 100% scale is often all you need, but if the original is small then increase the percentage. That gives you the flexibility to enlarge the photo if you decide to publish the image in a family history book. Don’t forget to scan the back too. There might be information that you’ll need later on.

**Don’t rely on being able to find the original again.** You probably know at least one genealogist that has “lost” a family photo. It’s a scary situation. You’ll be glad you scanned the images as a back-up. Each digitized picture will be multiple megabytes. These big files take up a lot of room on your hard drive. If you have a lot of photographs, you may need an external hard drive for storage. By scanning them at these specifications you’ll be able to later reduce their size for sharing, projection or uploading. Consider these high resolution files your “archival” copies.

When scanning, **turn off the auto-correct feature** that automatically corrects flaws in an image. Save your photos in their original condition, then make copies and use photo editing software to “fix” problems. Always save those edited images as a separate file and keep the original scan.

**Slides and Negatives:** Not all scanners have the capability to scan slides and negatives. When purchasing a scanner specifically ask if a particular model can

accommodate these types of images, and then do your research. You can find specifications on the manufacturer’s website. Once you’ve purchased a machine, read the manual and follow their directions. If that doesn’t work, do an Internet search for your scanner model followed by “scanning slides” or “scanning negatives.” There are dedicated slide scanners, but they are expensive.

**Cased Images:** Daguerreotypes and Ambrotypes It is possible to scan these cased images, but not all scanners can manage it. Sometimes the scanner reads the glass rather than the image causing a fuzzy scan. Try scanning one on your scanner to see what happens. If you have a dedicated photo scanner rather than a combination machine it should work. If it doesn’t work, don’t take the images out of the cases. You could inadvertently cause damage to the image. Daguerreotypes have chemical salts on the surface of a silver plate and are very fragile. Ambrotypes are on glass, but the photographic emulsion (the picture) can flake off. If you have a collection of these cased images, you’ll have better luck with a dedicated photo scanner. An alternative can use a camera to photograph these cased images, but the reflective mirror-like surface of a daguerreotype is a problem. You often end up photographing yourself in the image. Once you’ve scanned your pictures store the originals in acid- and lignin-free boxes. Find an organizational system that works for you. In general, keep it simple such as filing images in surname order.

**Use a photo organizing** program to keyword your digital pictures so you’ll be able to see all the digital files of “Aunt Sue” with a single click. Once you have these digital files take time to share the images and the stories with family. They’ll appreciate it and you’ll be saving your family history. (THE FAMILY TREE SEARCHER, Grays Harbor Genealogical Society, [www.GraysHarborGenealogy.com](http://www.GraysHarborGenealogy.com) Jan-Mar 2012, Vol. 23, No. 1 and reprinted from “The Weekly Discovery”, Ancestry.com e-newsletter, 18 Dec 2011.)

\*\*\*\*\*

### ANCESTRY MAGAZINE

May be history, but **you can read all the past issues online, free of charge.** You can find articles by many of today’s leading genealogy writers. Best of all, the past issues are available in their entirety free of charge. You can find the past 16 years of Ancestry Magazine on Google Books at: [books.google.com/books/serial/FTgEAAAAMBAJ?rview=1&lr=sa=N&start=0](http://books.google.com/books/serial/FTgEAAAAMBAJ?rview=1&lr=sa=N&start=0)

\*\*\*\*\*



**Membership Dues** Lewis County Genealogical Society membership runs January through December. Cost for one person is \$12 and for a couple in the same household is \$15. Membership includes a bimonthly newsletter. We meet January-June, September-November at the Lewis County PUD meeting room, 345 Pacific Avenue, Chehalis WA, on the third Tuesday evening of the months listed. Research trips are planned periodically. Please return the membership form to: LEWIS COUNTY GENEALOGICAL SOCIETY, PO BOX 782 CHEHALIS WA 98532-0782.

My/Our membership should read:

Name & Address: \_\_\_\_\_  
\_\_\_\_\_

Phone: \_\_\_\_\_

Email: \_\_\_\_\_

Preference to have newsletter by **email** \_\_\_\_\_ (attachment), or **standard postal mail**? \_\_\_\_\_

\_\_\_\_\_ Check for \$12 enclosed for 2012 membership

\_\_\_\_\_ Check for \$15 enclosed for 2012 membership

Permission to print member information in the newsletter? \_\_\_yes \_\_\_no

Please list surnames and states being researched: \_\_\_\_\_  
\_\_\_\_\_

Please send a self addressed stamped envelope if you would like a membership card & or receipt.

*Lewis County Genealogical Society*  
*PO BOX 782*  
*Chehalis WA 98532-0782*

