



Visit us at <http://walcgs.org/>

Email: wa.lcgs@hotmail.com

Volume #24 Issue # 3

May-Jun 2014

Officers

President – Teresa Parnell-Jordan

(360) 237-4797

jordanjunction@gmail.com

Vice President – Patty Olsen

(360) 219-6912 patricia1944a@gmail.com

Secretary – Joann Hulse

(360) 748-4244 wjhulse@localaccess.com

Treasurer – Leslie Parnell

(360) 978-4267 lparnell@tds.net

Genealogist - Margie Lloyd

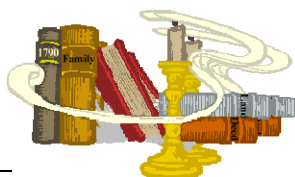
(360) 748-3069

Editor of the bi-monthly

Newsletter: Leslee Dunlap

(360) 492-3237

lesleed@minerallake.com



LCGS MEETINGS

May 20, 2014 – Using the Legacy Family Tree Program with Jerri McCoy

Jerri has used the Legacy Family Tree software program for 15 years, and will present a program on using the Legacy Family Tree program followed by a Q & A session.

Jerri was born and raised in San Diego, California. She received her Bachelor Degree in Mathematics from San Diego State University, and worked in the computer industry for 30 years before retiring a few years ago.

Jerri has been active in genealogy for about 40 years. She is a member of the Daughters of the American Colonists, the Daughters of the American Revolution, the Daughters of the Founders and Patriots of America, the Mayflower Society, the Associated Daughters of Early American Witches, the New England Historic Genealogical Society, the Olympia Genealogical Society, and the Washington State Genealogical Society. Jerri is a past president of two genealogical societies, and has held numerous lineage society offices.

Jerri has published two books on her family, and is working on two more. She wrote an article documenting an elusive Mayflower line ancestor, which was published in the *Mayflower Descendants*.

Meeting is at 7 pm with doors open at 6:45 pm at the PUD Building, 345 Pacific Ave, Chehalis, WA 98532

June 17, 2014 – Thirteen Original Colonies

Gary A Zimmerman is the Historian for the Pioneer Association of the State of Washington, based in Madison Park at Pioneer Hall. He has been a member of the Association since 1974, a trustee or officer of the group since 1982, and served as the Association President in 1989-90.

Gary has been president of the Fiske

Genealogical Foundation since 1998, after a year there as the director of education. He is a frequent program speaker for genealogy societies in Washington and Oregon, blending history and genealogical research techniques together in his presentations.

Gary is a 4th generation Seattleite, who had a career as a chemistry professor and as a university administrator at Seattle University and Antioch University Seattle. Along the way he served on the Bellevue City council in the 1970's and was chair of the Seattle Metro Council from 1980 to 1990. He is currently in his 35th year on the board of the Chief Seattle Council of the Boy Scouts.

Meeting is at 7 pm with doors open at 6:45 pm at the PUD Building, 345 Pacific Ave, Chehalis, WA 98532



EVENTS, SEMINARS.

May 17, 2014 – Seattle, WA

The **Seattle Genealogical Society** Spring Seminar, featuring **Jeanne Larzalere Bloom, CG**, will be at the Fairview Church, 844 NE 78th Street, Seattle, WA 98115.

The Seminar theme, *Wanted: Relatives – Dead or Alive*, will include presentations on *Lost Children: Orphans, Vagrants, Delinquents, Half-Orphans, Dependents, Surrendered, Adopted; Internet Techniques for Locating Lost Relatives; 1940 Census; and The Family Tapestry: Integrating Proof Arguments into the Genealogical Narrative*. For more information visit <http://www.seattlegenealogicalsociety.org>.

CG, Certified Genealogist is a service mark of the Board for Certification of Genealogists, used under license by board-certified associates after periodic competency evaluations. The board name is registered USP&TO.

Jeanne Larzalere Bloom, CG(SM) is a full-time professional researcher specializing in Chicago and Cook County research, problem solving, and multi-generational family histories. She conducts research projects for government agencies, attorneys, authors, newspapers, television-production companies, heir-search firms, oil-and-gas land lease companies, professional genealogists, and family researchers.

Her clients are international and include those in Australia, Canada, Czech Republic, England, France, Germany, Ireland, Israel, Norway, South Korea, Spain, Sweden, and Switzerland. On behalf of the Department of the Army and the Department of the Air Force, Jeanne searches and identifies family members of unaccounted for servicemen from World War II, the Korean War, and the Vietnam War. Jeanne researched the ancestry of actor-comedian Jason Sudeikis, for the television series, *Who Do You Think You Are?*, and appeared in the episode that first aired in May 2012.

She is a trustee and Treasurer of the Board for Certification of Genealogists.

June 14, 2014 - Mount Vernon, WA

Skagit Valley Genealogical Society will hold a Summer Seminar at First United Methodist Church, located at 1607 E. Division. **"GENEALOGY FOR EVERYONE"** This program will feature Donna Potter-Phillips of Spokane and Dave Obee of Victoria, British Columbia. Register online or by mail at SVGS, P O Box 715, Conway, WA 98238

Donna Potter Phillips will be presenting "Researching a Place Online - Living Here and Searching There"; and "Questions Asked By Eager Genealogists" where she will ask the question and the audience will answer the question. This will wrap up our day and will be a fun session for those attending.

Dave Obee will present sessions on "Seven Habits of Highly Successful Genealogists" with a goal of helping you to have a more successful researching experience and getting better quality answers; and "Your Library in the Cloud: a Genealogical Guide to Digital Collections" with pages relevant to your research may be difficult to find & he will provide ideas on how-to find the documents that will help

you learn more about your families or the local histories of the area of your research.

Barbara Johnson, SVGS member will discuss the science behind "DNA" and the type of tests available. She will also discuss the pros & cons of various companies and share her test findings,

Rita Schulze, SVGS member will present a session on "Beginning Genealogy - How to Get Started:"

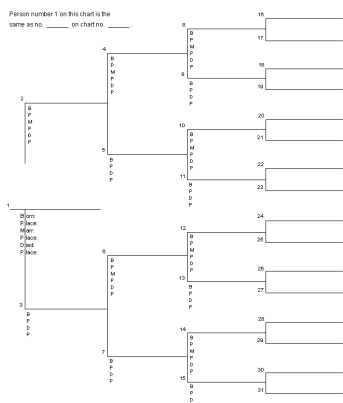
Judy Bayless, Whatcom member will present classes on "Getting the Most Out of Cyndis List" Learn what's new since the upgrade and discover features you may be missing and "The Genealogical Proof Standard and Why You Should Be Using It" - help focus your research, better ways to analyze and evaluate the evidence and arrive at a valid conclusion. We believe we have an all-around program that everyone should enjoy with Quality Speakers. We invite you to join us.

Seminar details and registration available at <http://www.skagitvalleygenealogy.org>

Aug 15 & 16, 2014 Washington State Annual Conference & Meeting to be at the Arlington High School Performing Arts Center. (See insert on updated speaker)



PEDIGREES - The Pedigree Book for members will be at each meeting. Feel free to glance through the book to check who other members are researching.



Pedigrees should be updated every year to reflect any changes or additions, including the **date**. DO WE HAVE YOUR PEDIGREE? We like to print a one page pedigree in each newsletter.

Websites to Check Out

Michigan County Histories and Atlases. An **EXCELLENT** source of Michigan information. The collection has very detailed scans of old histories, directories and plat maps. Search the surname and then select from the list. <http://quod.lib.umich.edu/m/micounty/>

Spectacular GIF Image Showing 170 Years of American History in Less Than a Minute <http://blog.eogn.com/2014/05/02/spectacular-gif-image-showing-170-years-of-american-history-in-less-than-a-minute/>

If you have never tried <http://www.findagrave.com/>, you are missing out on a great resource. It is a place to find your family graves and maybe you'll even find researchers there to collaborate with.

Citation for About.com German Records and Genealogical Source Materials http://genealogy.about.com/od/germany/a/basics_3.htm

German Baltic Genealogical Society at Darmstadt, Germany <http://www.dbgg.de/index.htm>

Citation for Family Search Wiki to Learn About German Records and Genealogical Source Materials. http://familysearch.org/learn/wiki/en/German_Research_on_the_Internet_-_an_Overview_-_complete_handout

The Sons of Union Veterans of the Civil War are building a database of every Civil War Veteran Gravesite, regardless of which side they fought on. They welcome you to enter your Civil War Veterans at <http://www.suvcwdb.org/home/>

Records Preservation and Access Committee's mission is to advise the genealogical community on ensuring proper access to historical records of genealogical value in whatever media they are recorded, on means to affect legislation, and on supporting strong records preservation policies and practices. <http://www.fgs.org/rpac/>

War of 1812 document preservation project. <http://www.preservethepensions.org/>
Ancestry.com matches \$1 for every \$1 donated.

Using Facebook to Connect the Dots

By Sandi Gaffney

I cannot emphasize the importance of joining a genealogy society or going to seminars, because it might be just one thing that gets mentioned that will help you with additional research or solving the question.

In October of 2009 I went to visit my mother, (Leona Vanderlinden Wick b. 26 Dec 1919-d. 20 Apr 2010) and brother in Cornell, Michigan. They had recently moved into a house he had finished near where we grew up. I had been involved with family genealogy for a few years and knew what I was looking for. I started with family photo albums, asking my mother questions and scanning what I wanted. I found a chest that had been my grandmother's (Ida Marie Sjoblad Wick b. 23 Nov 1893-d. 20 Apr 1974). There was a picture of my grandmother, her mother and sisters probably taken shortly after their arrival from Finland in 1900. There were pictures of Ida taken at various ages up until her marriage to my grandfather (Charles John Wick aka Karl Johan Maars b.6 Jan 1890-d.25 Jun 1958) in May of 1910. It contained my father's (Vernon Carl Wick b.25 Feb 1911-d. 14 Jan 1981) high school report cards, army papers, marriage certificate, etc. I found my grandparents' paperwork showing their names in Finland and the dates they left.

I felt like I had found a gold mine and to a genealogist, it was.

Armed with this new information I returned to my home in the state of Washington. I contacted Hasse Nygård at the Swedish Finn Historical Society (SFHS). He emailed me back saying my grandmother was already in the system and to post a query about my grandfather. I entered the information into my Family Tree program and the tree leaves showed up. I connected with two cousins, the one in Arizona had the same names I received via SFHS and the one in New England was my

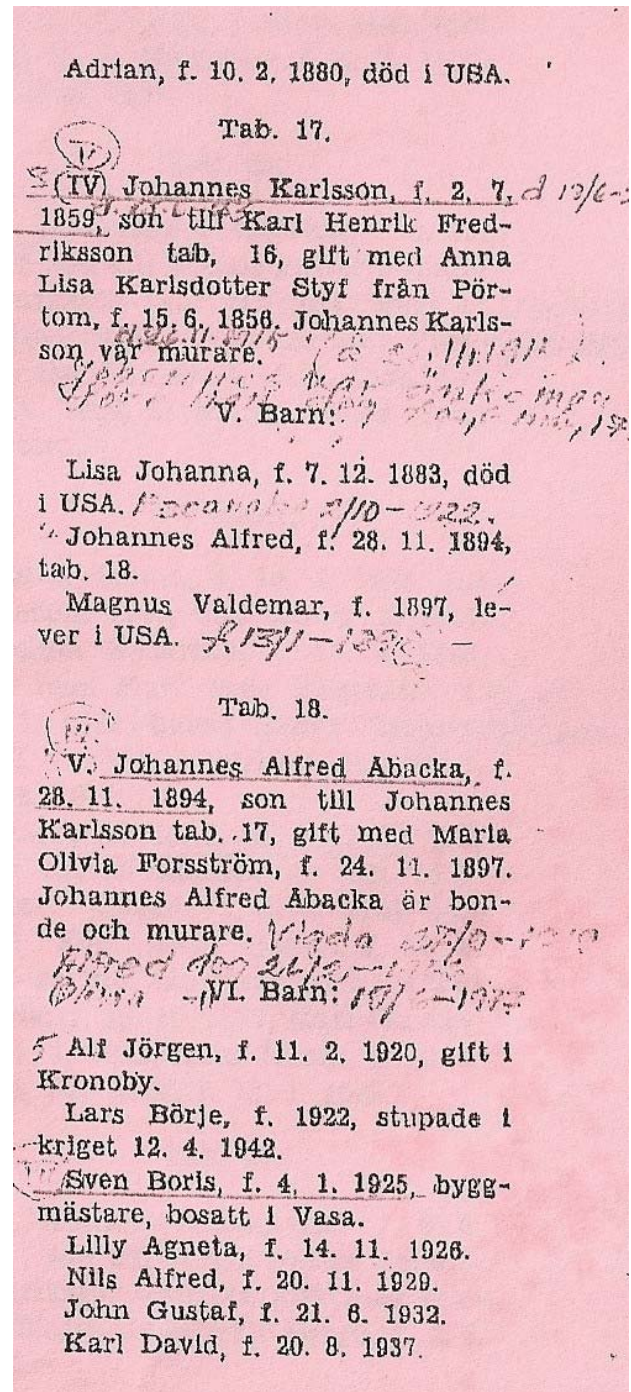
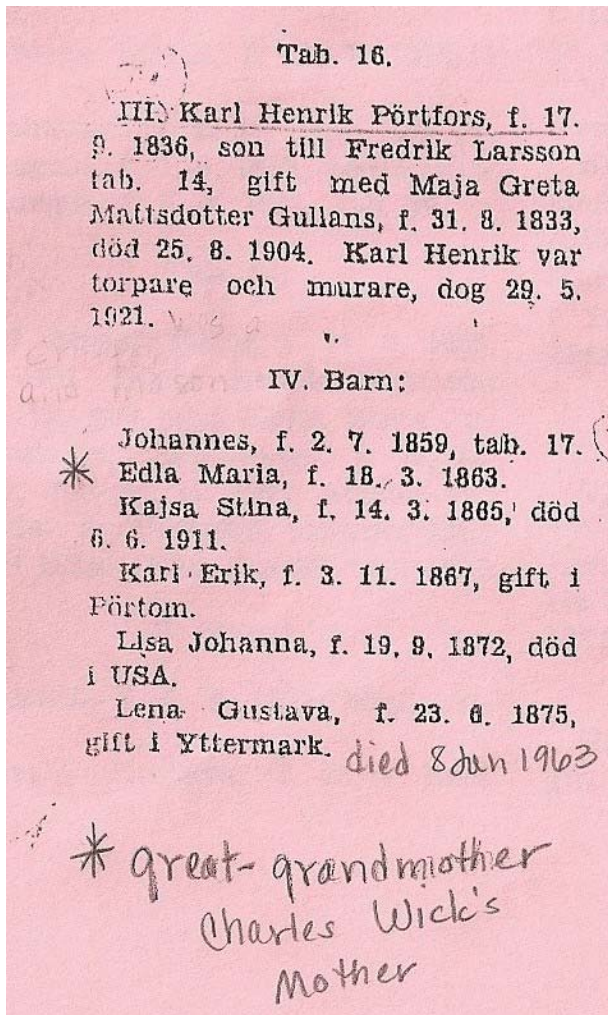
grandmother's sister, Juliana's granddaughter. I exchanged pictures and miscellaneous paperwork with Marjorie in New England. She found the bible Ida brought with her from Finland in a closet while cleaning and sent it to me.

My mother fell in December 2009 and passed away in April 2010. I returned to Michigan for the funeral. We received a condolence email from Milton Johnson in Florida. I asked his connection to our family and he was not sure except as a child he would visit Ida and Charles and was told they were related. He sent a few bits of information about his parents and brothers all deceased. His brother, Don Johnson had visited Finland in 2004 meeting their father's brother, Alfred. Going back through the CD's of scanned items from 2009 I noticed his father, Magnus Waldemar Brummell changed to Johnson in the states, had been a pallbearer for Charles. I had heard at a meeting or seminar that pallbearers could be relatives. Armed with this I made family record sheet for all six pallbearers. I looked at www.ancestry.com, <http://dcmigs.com> , www.seekingmichigan.com, www.familysearch.org and www.finlander.geneologia.fi/ working my way back and forth with the names. I found several connections not the ones I wanted. Milton also said Magnus came to Escanaba, Michigan because he had a sister; Josephine married to Hack Wilson, another pallbearer. It turned out that Hack, nickname for Hilmar, was really the son of Magnus' sister, Lisa.

I traveled to Finland in June 2012 (the SFHS Tour) visiting the area my grandparents were born. Prior to going I received a pedigree chart with living relatives on Ida's side resulting in a day long visit with 5th generation cousins. Several months after we returned I received another chart for Charles' side. I just could not pick up on the Johnson-Wilson connection. Not knowing how to get in touch with these new relatives I turned to Facebook. Sending messages explaining the way we were related.

Nothing!!!!

March of 2013 brought a squeal of delight! I received an email from a young man in Finland. His grandfather had a booklet about the farm Charles' mother, Edla Maria Portfors was from. He sent me a copy along with personal information about his wife and parents. Several years ago his grandfather, Alfred Åbacka, had a visitor from the United States, his name was Don. Milton Johnson's brother, Don was the visitor.



That is how I used Facebook and what I learned at seminars and meetings to connect the dots.

Looking Forward.... At the September meeting, we will be appointing an election committee. Please consider supporting your society by being a part of the election committee or running for an office.



**2014 PAID LEWIS COUNTY GENEALOGY
SOCIETY MEMBER ROSTER**

BAIRD, David & Connie, 1016 W 4th St., Centralia, WA 98531, 360-736-9900, BAIRD, CA & OR; LYONS, NY, MA

BAKER, Carolyn & Michael, 881 Shorey RD, Chehalis WA 98532, 360-748-7390, rustybits@comcast.net.
PAKAR; BREMGARTNER; RUETHER.

BISHOP, Barbara & Chrystal Brooks, 3114 Bailey Rd., Centralia, WA 98531. 360-736-7814.
Barbishop2011@comcast.net BISHOP; BRACEY;
DANKWARDT; SCHULTZKE

BORDEN, Garth & Janice, 1403 Mark Twain DR, Centralia, WA 98531, 360-669-0439; BORDEN/BAUDIN;
LYON; BETTY; ELLIOTT; MORGAN.

BOWMAN, Rosalie B., 261 Hewitt Rd, Chehalis, WA 98532, arebec@localaccess.com 360-748-4540. AMES-OH; HODGE-NY; PALMETER-MN; RUSSELL-NH; WEBSTER-NY; WOODWARD-MN; BURLERSON; DODGE.

DUNLAP, Leslee J., PO Box 200, Mineral, WA 98355, 360-492-3237, LesleeD@minerallake.com. BORDEN; HARRINGTON; WETHERBEE; MONTAGUE; SINCLAIR; BLOOM/BLOM; COMBS; PARRISH; BREUER; MUERY/MÜRI; GING.

FAGERNESS, Paul, PO BOX 258, Adna WA, 98522, 360-740-8855, ficklefinn230@gmail.com. FAGERNESS-WA.

GAFFNEY, Sandra, 209 Curtis Hill Rd, Chehalis, WA 98532, 360-748-4928, gaffney62@msn.com; NEEDHAM, FEAK, RIVERS, WISE, - Michigan/Wisconsin area; other in Finland.

GUENTHER, Melody, 582 B Winston CK RD, Mossyrock, WA 98564, 360-985-2896; mguenther@tds.net.
BARNETT; BARRETT; WYATT; GILLILAND; SEEVER, SE MO, KY, TN.

HINCK, Tam & Roger, 138 Equine DR, Onalaska WA 98570, 360-978-5299; minihorseteacher@tds.net.
AVELAR; MACHADO; MCBAIN; GARVIS-Azores, Portugal, Scotland, Canada, Norway.

HULSE, Joann, 2274 Rice Rd, Chehalis, WA 98532, wjhulse@localaccess.com 360-748-4244. BENSON; CARSON; CHRISTOFFERSON (Kristofferson); CLARY; COOPER; FROST, SC & AL; HENRY; HULSE, NY; KLINE, PA & AL; McELROY, AL; PARKER, NY & MA; PAULSON; PETRASEK, Bohemia & AL; RICE; RUTLEDGE; SCHOONOVER; SHERBETT; TOOMEY; VATNE; WEAVER, AL.

IVERSON, Margaret, 210 Pattee RD, Chehalis WA 98532, 360-740-5899; imargareti@hotmail.com. WELLS; MINOR; WRIGHT, VA, WV, KY.

JONES, Karen, 1005 Shadowbrook DR SW, Olympia, WA 98512, 360-943-6095, kjonesfamgen@gmail.com;
LATIMER-CT; JOHNSON-IL; JONES-MO; DANIELS.

JORDAN, Teresa PARNELL, 522 N Iron ST Apt b3, Centralia, WA 98531, 360-237-4797;
jordanjunction@gmail.com.

KALICH, Judy, 614 Newaukum Valley RD, Chehalis WA 98532, 360-748-6065; judywk@comcast.net.
NICEWONGER (NEUENSCHWANDER-NE;PETTETT, NE; KALICH; FLICKINGER.

LANTAU, Chuck & Vicki, PO BOX 555, Napavine, WA 98565; 360-520-9176; justcachin@qwestoffice.net;
LANTAU; HUBER; KOEPPE; DEVORE; JOHNSON.

LAYTON, June, 369 Avery Rd E, Chehalis WA 98532, ph 360-262-3296. BIRD-IN; COLLINS; DUKE; HAWKS; HOFT-IL; HYDE; SUMMERS; MESCHENDORF-IL; BICKFORD; GOULD; GUPTIL; LAYTON-Maryland; MILLER; SAUCER; SANDERS; RICE-NY. BIRD, LUNBECK-IN; HAWKS-JY; SUMMERS-OH; COLLINS-NY.

LLOYD, Margie, 123 Fieldcrest Lane, Chehalis, WA., 98532, 360-748-3069. LLOYD-1850-60 IA, PA; RATERS-1850-60 IA; DONAHUE-1880-1900, Maine.

MCCORMICK, Jarlee, 601 Twin Oaks RD, Chehalis WA 98532, 360-748-6752; jarleehoke@gmail.com.

MCREYNOLDS, Sam & MYHRE, Allyson, 1025 SE Evergreen DR, Chehalis WA 98532; 307-631-2347; sametalman@yahoo.com; MCREYNOLDS; SHAFER; WALTON; WHITAKER; MIZE.

MITCHELL (KROLL), Maeve, 24828 117th PL SE, Kent, WA 98030, ph 206-755-9412, maeve.mitchell@yahoo.com.
GRAVES; HARDESTY; RAGAN; RICHES; TUCKER; BLACK, KROLL, GARRISON; BURDINE, MONAHAN, MCNELLY; BURRIS, GEORGE, HALBERT, HARKINS, LEWIS, MITCHELL, SHERRILL; RAGEN; SALLEE.

OLSEN, Patricia, PO Box 933, Chehalis, WA., 98532, 360-262-3177, patricia1944a@gmail.com .,VANN;
DICKINSON; CHAMBERS; JOY; Goldie Elizabeth JONES b. OH or PA.

PARNELL, Leslie, 183 Kruger Rd, Onalaska, WA 98570, lparnell@tds.net, 360-978-4267. AVANTS; GOODWYN; LOONEY; MUCHMORE; PARNEL (PARNELL); SCHAFFER (SHAFER).

PATTON, Linda, 435 Avery Rd E, Chehalis, WA., 98532, 360-262-3672, Lindasusiepatton@centurylink.net.
PATTON; BARNES; SKEEN/ ALLEN; OSBORN; MUSE; MCCAULEY; MCDOWELL

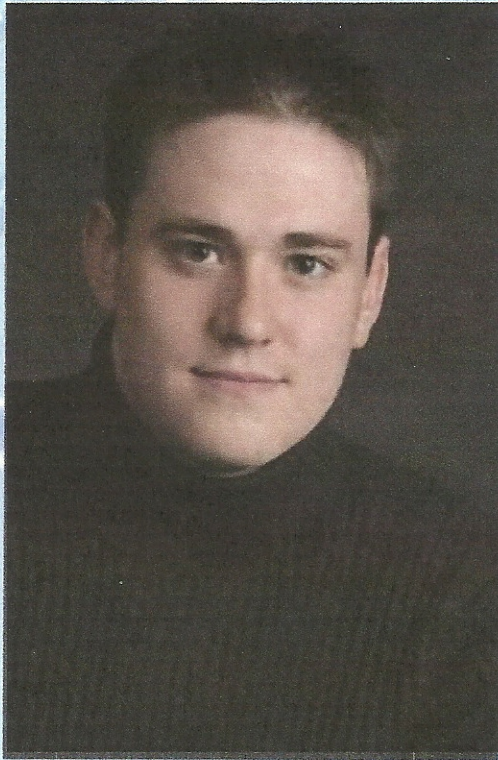
STEVENS, Richard & Gayle Stevens, 121 McCall Lane, Chehalis, WA., 98532, 360-262-3371,
dgms@reachone.com.

WILLIAMS, Linda, 110 Valley Meadows DR, Chehalis WA 98532; 360-262-0931; kinseekers@comcast.net;
WOHLD; DOOMS; WILLIAMS; RICHTER.

WISNER, Merlyn & Douglas, 133 Ridgeview Rd, Chehalis, WA 98532, 360-748-4675. LLEWELLYN;
WISNER; JEFFRIES

Note from the editor about updated information and RENEWALS – If a renewal application was not submitted at the beginning of the year, please let us know any changes to be made.

Program Change Announcement: Due to an unforeseen conflict David Rencher will not be able to speak at the 2014 Washington State Genealogy Conference. The silver lining to this disappointing change of events is that Joshua Taylor of hit shows *Who Do You Think You Are?* and *The Genealogy Roadshow* will be our new main speaker.



D. Joshua Taylor, MA, MLS is the President of the Federation of Genealogical Societies and the Data Strategy Manager – United States and Canada for DC Thomson Family History, and a nationally known and recognized genealogical author, lecturer, and researcher. A frequent speaker at genealogical societies, libraries, and other organizations, his previous speaking engagements include the Federation of Genealogical Societies Annual Conferences, the National Genealogical Society Annual Conference, the Salt Lake Institute of Genealogy, and RootsTech. He has authored articles in *American Ancestors*, *UGA Crossroads*, *FGS Forum*, *Association of Professional Genealogists Quarterly*, and *New England Ancestors*, and was a columnist for *Digital Genealogist*. Joshua is the former Director of Education and Programs at the New England Historic Genealogical Society.

Joshua is the recipient of numerous awards and honors, including RootsTech’s Distinguished Presenter Award, the Federation of Genealogical Societies Award of Merit, and the Rubincam Youth Award from the National Genealogical Society. He holds an MLS (Archival Management) and an MA (History) from Simmons College and has been featured genealogist on the hit PBS show, *Genealogy Roadshow* and NBC’s *Who Do You Think You Are?* with Sarah Jessica Parker, Ashley Judd, Reba McEntire, and Rob Lowe.

As if Josh Taylor wasn’t enough...check out our fantastic lineup of speakers and presentations.

Luana Darby of Salt Lake City will be speaking on fraternal society records and German Immigrant records.	Steven Morrison with two classes. One on genealogical writing and the other on using manuscripts.
Mary Katheryn Kozy will have two presentations on DNA covering MtDNA, YDNA, and Autosomal.	Donna Potter Phillips will get people primed with her two lectures on the fundamentals of genealogy.
Margie Beldin will pass along her knowledge of technology and genealogy with two topics.	Susan Faulkner is slated for two programs about getting more from census records and vital records.
Janet Camarata will do her fantastic program on using timelines to advance your research.	Patty MacNamee of NARA will present ethnic records at the National Archives.
Jill Morelli’s class on self-publishing is a must see and you won’t want to miss it.	Teresa Schulze’s fun presentation on digital scrapbooking is a favorite of many.

Eric Stroschein with his four session workshop that shows researchers how use the Genealogical Proof Standard following a family’s relationships from basic to advanced.

WOW! ... What an incredible conference. 2 Days, 24 Classes
To stay informed go to <http://stillygen.org>
Like us on Facebook@ WSGS 2014 Conference

Membership Dues Lewis County Genealogical Society membership runs January through December. Cost for one person is \$12 and for a couple in the same household is \$15. Membership includes a bimonthly newsletter. We meet January-June, September-November at the Lewis County PUD meeting room, 345 Pacific Avenue, Chehalis WA, on the third Tuesday evening of the months listed. Research trips are planned periodically. Please return the membership form to: LEWIS COUNTY GENEALOGICAL SOCIETY, PO BOX 782 CHEHALIS WA 98532-0782.

My/Our membership should read:

Name & Address: _____

Phone: _____

Email: _____

Preference to have newsletter by **email** _____ (attachment), or **standard postal mail**? _____

_____ Check for \$12 enclosed for 2014 membership

_____ Check for \$15 enclosed for 2014 membership

Permission to print member information in the newsletter? ___yes ___no

Please list surnames and locations being researched:

Please send a self addressed stamped envelope if you would like a membership card & or receipt.

Items for the July-August newsletter are due by June 30th

Lewis County Genealogical Society
PO BOX 782
Chehalis WA 98532-0782

