



Volume #24 Issue # 1

Jan-Feb 2014

Officers

President – Teresa Parnell-Jordan

(360) 237-4797

jordanjunction@gmail.com

Vice President – Patty Olsen

(360) 219-6912 mctwert@aol.com

Secretary – Joann Hulse

(360) 748-4244 wjhulse@localaccess.com

Treasurer – Leslie Parnell

(360) 978-4267 lparnell@tds.net

Genealogist - Margie Lloyd

(360) 748-3069

Co-Editors of the bi-monthly

Newsletter are: **Leslie**

Parnell &

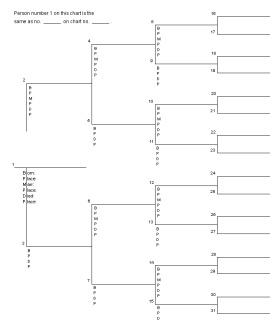
Teresa Parnell-Jordan

jordanjunction@gmail.com



18 Feb 2014- LCGS – Guest speaker is Kimberly Smeeck from the Washington State Archives. A short meeting will be held after the program. Lewis County PUD Auditorium at 345 Pacific Ave, Chehalis, 7pm.

PEDIGREES - The Pedigree Book for members will be at each meeting. Feel free to glance through the book to check who other members are researching.



LCGS MEETINGS

21 Jan 2014 – Field Trip to Family History Center, Church of the Latter Day Saints, 2195 Jackson Hwy. (Entrance is at back of building, should you be unable to use the steps, there is an entrance on the south side of the building). Volunteer librarians will explain the research tools available at the FHC. You do not have to be a member to use the FHC.

Meeting is at 7 pm with doors open at 6:45 pm. No early research will be held before the meeting. There will be some time to do some research after the orientation. See you there!
EVENTS, SEMINARS.

Pedigrees should be updated every year to reflect any changes or additions, including the **date**. **DO WE HAVE YOUR PEDIGREE?** We like to print a one page pedigree in each newsletter.

April 12, 2014 the Olympia Genealogical Society will host Christine Rose CG, CGL,

FASG at their Spring Seminar. Location : the Double Tree by Hilton (formerly The Phoenix Inn. To learn more about Christine go here: <http://www.christine4rose.com/> Go here for more news on the seminar: <http://www.rootsweb.ancestry.com/~waogs/seminars.htm>

April 19, 2014 Tacoma-Pierce County Genealogical Society will host their Spring Seminar. Guest Speaker is Dick Eastman who is the creator of Eastman’s Online Newsletter. Location: LaQuinta Inn & Suites, 1425 East 27th St., Tacoma. Go here for more information: <http://www.rootsweb.ancestry.com/~watpccgs/seminar.html>

Aug 15 & 16, 2014 Washington State Annual Conference & Meeting to be at the Arlington High School Performing Arts Center. (see insert on updated speaker)

DUES ARE DUE – 2014 Membership Dues remain the same as last year, \$12 for single and \$15 for family in same household. Please fill out a new membership form as additional connections, searches, address, phone, or email may have changed. If membership form not available, just jot down updated information on a piece of paper. THANKS SO MUCH



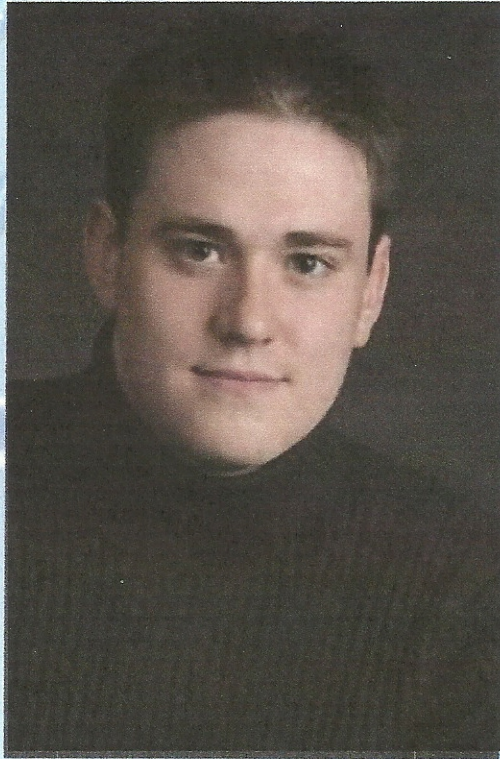
PUBLICATIONS FOR SALE-Lewis County Genealogical Society

- ✓ Baw Faw 1850-1976 A Historical History of the Boistfort Community, Lewis County, Washington \$5.50
- ✓ Lewis County Washington Mortuary Records Vol. 1 1895-1910 (Sticklin Register 5 Nov 1908-1 Feb 1910 missing) \$8.00
- ✓ Lewis County Washington Mortuary Records Vol. 2 1911-1920 (Includes List of Lewis County Cemeteries & Common Medical Terms (Fissel-Brown, Sticklin, & Newell-Hoerling Mortuary Records are included in Vol. 1 & 2. \$12.00
- ✓ Lewis County Washington Birth Register 1891-1906 \$6.00
- ✓ Lewis County Washington Territorial Marriages 1847-1889 \$5.50
- ✓ Lewis County Washington Death Records 1891-1906 \$5.50
- ✓ Lewis County Washington Territorial Census 1871 \$5.00
- ✓ Lewis County Washington Territorial Census 1883 \$10.00
- ✓ Lewis County Washington Newspaper Extracts Vol. 1 1884-1886 \$6.00
- ✓ Lewis County Washington Newspaper Extracts Vol. II 1887-1889 \$8.00
- ✓ Lewis County Washington Newspaper Extracts Vol. III 1890-1893 \$17.50
- ✓ Lewis County Washington Newspaper Extracts Vol. IV 1894-1896 \$17.50
- ✓ Lewis County Washington Newspaper Extracts Vol. V 1897-1899 \$22.50

Shipping and Handling \$6.00 for the first book

Add \$2.00 for each additional book

Program Change Announcement: Due to an unforeseen conflict David Rencher will not be able to speak at the 2014 Washington State Genealogy Conference. The silver lining to this disappointing change of events is that Joshua Taylor of hit shows *Who Do You Think You Are?* and *The Genealogy Roadshow* will be our new main speaker.



D. Joshua Taylor, MA, MLS is the President of the Federation of Genealogical Societies and the Data Strategy Manager – United States and Canada for DC Thomson Family History, and a nationally known and recognized genealogical author, lecturer, and researcher. A frequent speaker at genealogical societies, libraries, and other organizations, his previous speaking engagements include the Federation of Genealogical Societies Annual Conferences, the National Genealogical Society Annual Conference, the Salt Lake Institute of Genealogy, and RootsTech. He has authored articles in *American Ancestors*, *UGA Crossroads*, *FGS Forum*, *Association of Professional Genealogists Quarterly*, and *New England Ancestors*, and was a columnist for *Digital Genealogist*. Joshua is the former Director of Education and Programs at the New England Historic Genealogical Society.

Joshua is the recipient of numerous awards and honors, including RootsTech’s Distinguished Presenter Award, the Federation of Genealogical Societies Award of Merit, and the Rubincam Youth Award from the National Genealogical Society. He holds an MLS (Archival Management) and an MA (History) from Simmons College and has been featured genealogist on the hit PBS show, *Genealogy Roadshow* and NBC’s *Who Do You Think You Are?* with Sarah Jessica Parker, Ashley Judd, Reba McEntire, and Rob Lowe.

As if Josh Taylor wasn’t enough...check out our fantastic lineup of speakers and presentations.

Luana Darby of Salt Lake City will be speaking on fraternal society records and German Immigrant records.	Steven Morrison with two classes. One on genealogical writing and the other on using manuscripts.
Mary Katheryn Kozy will have two presentations on DNA covering MtDNA, YDNA, and Autosomal.	Donna Potter Phillips will get people primed with her two lectures on the fundamentals of genealogy.
Margie Beldin will pass along her knowledge of technology and genealogy with two topics.	Susan Faulkner is slated for two programs about getting more from census records and vital records.
Janet Camarata will do her fantastic program on using timelines to advance your research.	Patty MacNamee of NARA will present ethnic records at the National Archives.
Jill Morelli’s class on self-publishing is a must see and you won’t want to miss it.	Teresa Schulze’s fun presentation on digital scrapbooking is a favorite of many.
Eric Stroschein with his four session workshop that shows researchers how use the Genealogical Proof Standard following a family’s relationships from basic to advanced.	

WOW! ... What an incredible conference. 2 Days, 24 Classes
To stay informed go to <http://stillygen.org>
Like us on Facebook@ WSGS 2014 Conference



Membership Dues Lewis County Genealogical Society membership runs January through December. Cost for one person is \$12 and for a couple in the same household is \$15. Membership includes a bimonthly newsletter. We meet January-June, September-November at the Lewis County PUD meeting room, 345 Pacific Avenue, Chehalis WA, on the third Tuesday evening of the months listed. Research trips are planned periodically. Please return the membership form to: LEWIS COUNTY GENEALOGICAL SOCIETY, PO BOX 782 CHEHALIS WA 98532-0782.

My/Our membership should read:

Name & Address: _____

Phone: _____

Email: _____

Preference to have newsletter by **email** _____ (attachment), or **standard postal mail**? _____

_____ Check for \$12 enclosed for 2014 membership

_____ Check for \$15 enclosed for 2014 membership

Permission to print member information in the newsletter? ___yes ___no

Please list surnames and states being researched: _____

Please send a self addressed stamped envelope if you would like a membership card & or receipt.

Items for the Mar-April newsletter are due by February 28th

Lewis County Genealogical Society
PO BOX 782
Chehalis WA 98532-0782

